



Beaufort County
Public Works
Stormwater Infrastructure
Project Summary

Project Summary: Huspah Drive

Activity: Drainage Improvement

Narrative Description of Project:

Duration: 6/30/15 - 11/5/15

Project improved 2,424 L.F. of drainage system. Shinn cut, grubbed, cleared and constructed 2,424 L.F. of workshelf. Reconstructed 2,424 L.F. of channel. Installed (1) driveway pipe, (3) access pipes, (5) bleeder pipes, (2) access gates and rip rap for erosion control. Jetted (1) access pipe and (1) crossline pipe.

2015-007 / Huspah Drive	Labor Hours	Labor Cost	Equipment Cost	Material Cost	Contractor Cost	Indirect Labor	Total Cost
AGI / Access Gate - Installed	42.0	\$991.18	\$386.33	\$389.67	\$0.00	\$628.73	\$2,395.91
APJT / Access pipe - jetted	10.0	\$228.80	\$43.40	\$21.98	\$0.00	\$148.50	\$442.68
AUDIT / Audit Project	1.5	\$35.24	\$0.00	\$0.00	\$0.00	\$19.85	\$55.08
BPINST / Bleeder pipe - Installed	138.0	\$3,178.18	\$1,463.55	\$2,419.92	\$0.00	\$2,016.38	\$9,078.03
CCO / Channel - cleaned out	278.0	\$6,310.39	\$2,148.23	\$576.93	\$0.00	\$3,951.06	\$12,986.60
CLPI / Crossline Pipe - Installation	46.0	\$1,226.74	\$204.20	\$1,758.91	\$0.00	\$805.40	\$3,995.25
CLPJT / Crossline Pipe - Jetted	4.0	\$91.52	\$17.36	\$21.98	\$0.00	\$59.40	\$190.26
CSHN / Channel - Shinn cut	30.0	\$719.44	\$502.97	\$175.57	\$0.00	\$453.50	\$1,851.48
DEBREM / Debris Removal - Jobsite	44.0	\$1,059.96	\$203.20	\$8.94	\$0.00	\$671.20	\$1,943.30
HAUL / Hauling	253.0	\$5,737.94	\$1,827.48	\$4,722.78	\$0.00	\$3,657.13	\$15,945.33
HYDR / Hydroseeding	31.0	\$666.45	\$168.60	\$712.89	\$0.00	\$418.28	\$1,966.21
ONJV / Onsite Job Visit	45.0	\$1,541.97	\$169.16	\$78.20	\$0.00	\$1,038.97	\$2,828.30
PI / Project Inspection	2.0	\$91.20	\$7.24	\$5.10	\$0.00	\$67.92	\$171.46
PL / Project Layout	8.0	\$260.35	\$28.56	\$17.05	\$0.00	\$184.23	\$490.19
RMTRW / Remove trees - Workshelf	19.0	\$448.82	\$14.16	\$10.86	\$0.00	\$284.43	\$758.27
SC / Sediment Control	4.0	\$92.05	\$28.28	\$15.52	\$0.00	\$59.82	\$195.67
SPACT / Stockpile activity	40.0	\$930.10	\$365.50	\$139.37	\$0.00	\$585.80	\$2,020.77
STAGING / Staging Materials	12.0	\$289.97	\$114.54	\$36.20	\$0.00	\$186.21	\$626.92
STBY / Stand By	20.0	\$451.48	\$14.16	\$7.24	\$0.00	\$283.16	\$756.04
UC / Utility Coordination	2.0	\$88.54	\$7.24	\$5.10	\$0.00	\$67.92	\$168.80
WSDR / Workshelf - Dressed	12.0	\$284.16	\$60.10	\$39.82	\$0.00	\$187.59	\$571.67
WSREP / Workshelf - Repair	40.0	\$930.10	\$277.32	\$57.92	\$0.00	\$585.80	\$1,851.14
WSSHN / Workshelf - Shinn cut	244.5	\$5,777.25	\$2,879.86	\$822.93	\$0.00	\$3,663.99	\$13,144.02
2015-007 / Huspah Drive Sub Total	1,326.0	\$31,431.83	\$10,931.44	\$12,044.86	\$0.00	\$20,025.26	\$74,433.39
 Grand Total	 1.326.0	 \$31.431.83	 \$10.931.44	 \$12.044.86	 \$0.00	 \$20.025.26	 \$74.433.39

Before

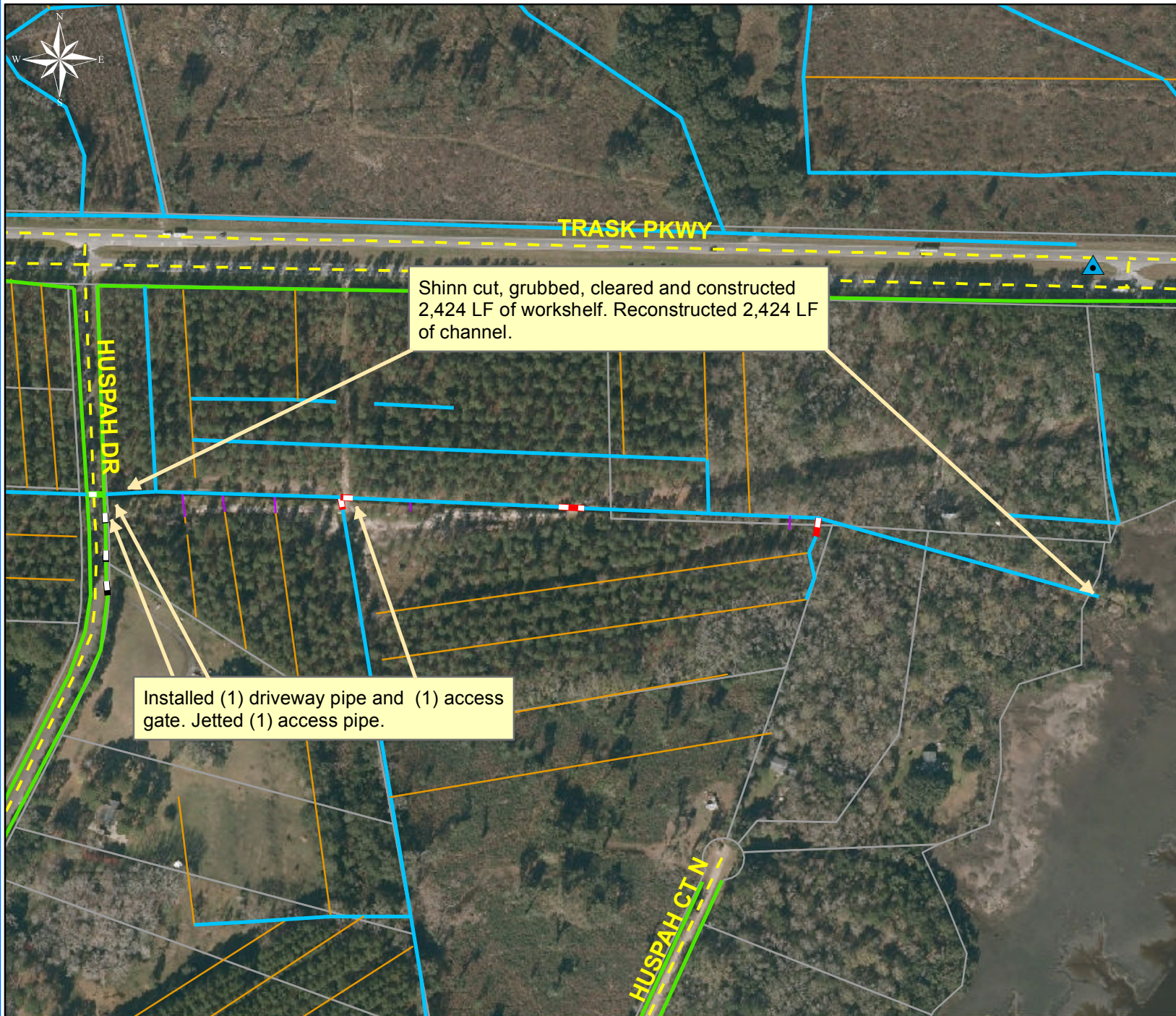


During



After





Project: Huspah
Drive
Map 1

Activity: Drainage
Improvement

Project #:
2015-007

Township/SW Dist:
Sheldon/5

Completed:
November 2015

Legend

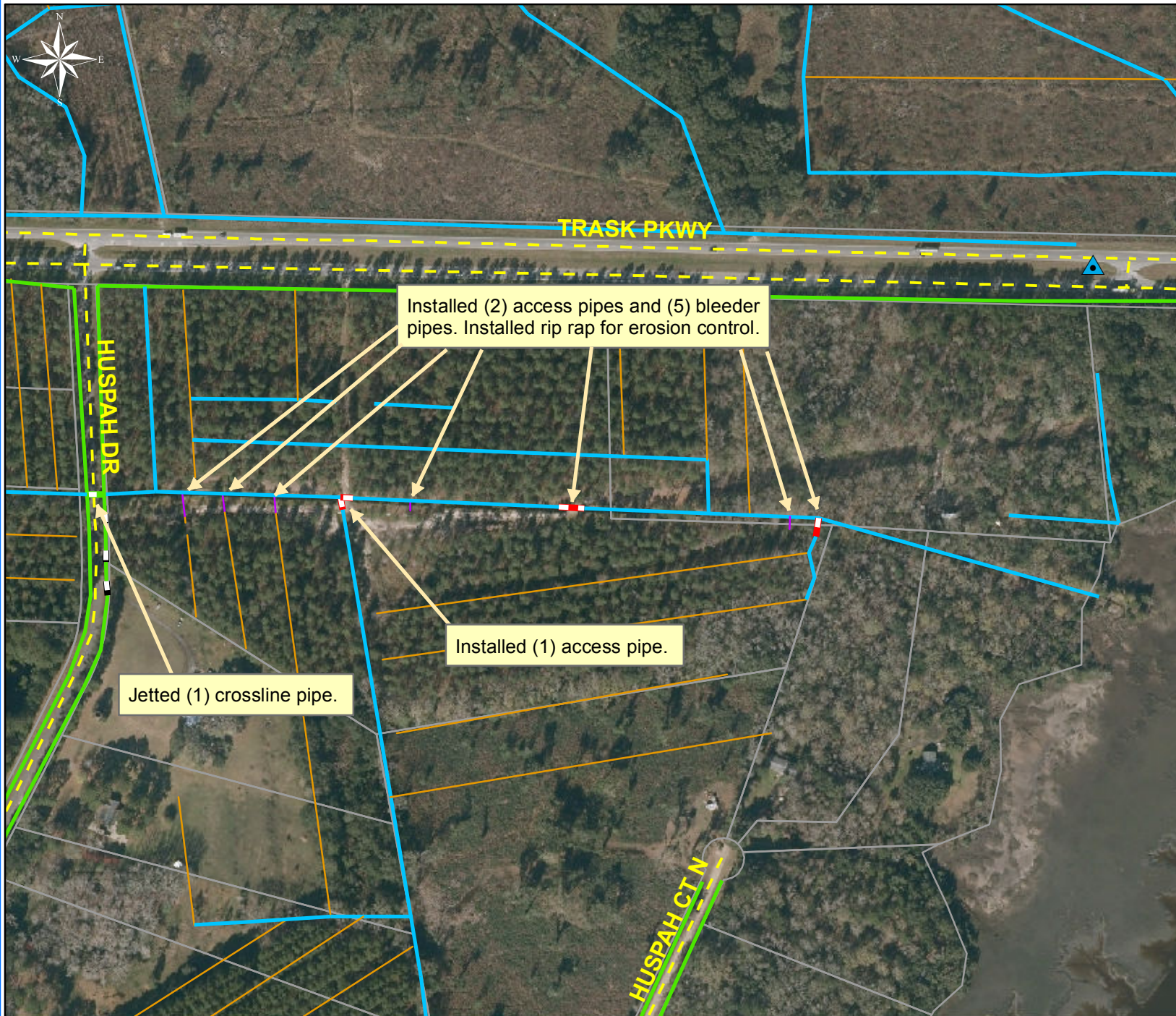
Drainage Type

- Access Pipe
- Bleeder Pipe
- Channel Pipe
- Channel
- Stream
- Crossline Pipe
- Driveway Pipe
- Lateral
- Lateral Pipe
- River
- Road Pipe
- Roadside
- Roadside Pipe

0 80 160 320 480 640
Feet

1 inch = 330 feet

Prepared By: BC Stormwater Management Utility
Date Print: 05/25/16
File:C:\project summaries map\Huspah Drive Map #1_2015-007



Project: Huspah
Drive
Map 2

Activity: Drainage
Improvement

Project #:
2015-007

Township/SW Dist:
Sheldon/5

Completed:
November 2015

Legend

Drainage Type

- Access Pipe
- Bleeder Pipe
- Channel Pipe
- Channel
- Stream
- Crossline Pipe
- Driveway Pipe
- Lateral
- Lateral Pipe
- River
- Road Pipe
- Roadside
- Roadside Pipe

0 80 160 320 480 640
Feet

1 inch = 330 feet

Prepared By: BC Stormwater Management Utility

Date Print: 05/25/16

File: C:\project summaries map\Huspah Drive Map 2_2015-007